

David Hollis

WHY HE & CHOOSING A UNIVERSITY



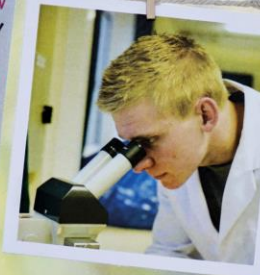
All about you....



Loughborough
University



CREATIVE WRITING
BUSINESS AND LAW
PHOTOGRAPHY
AERONAUTICAL ENGINEERING
POLITICS, HISTORY AND
INTERNATIONAL RELATIONS
FINE ART
MIDWIFERY
CHEMISTRY
ENGLISH
HAIR AND BEAUTY MANAGEMENT
DANCE
BIOCHEMISTRY
MEDICINAL AND PHARMACEUTICAL CHEMISTRY



ELECTRONIC AND ELECTRICAL ENGINEERING
INTERNATIONAL BUSINESS
PHYSICS
JEWELLERY DESIGN
DENTISTRY
LAW AND ECONOMICS
HUMAN OPTOMETRY
RESOURCE MANAGEMENT
HISTORY OF ART
GEOGRAPHY AND SPORT MANAGEMENT
MARINE BIOLOGY

MARKETING
INFORMATION TECHNOLOGY
SYSTEMS MANAGEMENT
ENGINEERING FOR BUSINESS
ENVIRONMENTAL SCIENCE
ACCOUNTING
TEXTILES INNOVATION AND DESIGN
AND FINANCIAL MANAGEMENT
INFORMATICS
MENTAL HEALTH
NURSING
ADVERTISING
CHEMICAL ENGINEERING
POLITICS
BUSINESS INFORMATION SYSTEMS



RETAIL, MARKETING AND MANAGEMENT
MATERIALS ENGINEERING
COMPUTER SCIENCE
CHEMISTRY WITH
SPORT SCIENCE
GREEK
MATHEMATICS AND SPORT SCIENCE
BIOMATERIALS ENGINEERING
EQUINE MANAGEMENT
CRIMINOLOGY AND SOCIAL POLICY
PHYSICS WITH SPORT SCIENCES
SPORTS MANAGEMENT
MATHEMATICS WITH STATISTICS
SPORT AND EXERCISE PSYCHOLOGY
POPULAR MUSIC
ECONOMICS WITH ACCOUNTING



HISTORY
FOOTWEAR DESIGN
GEOLOGY
HORTICULTURE
COMPUTING AND MANAGEMENT
ECONOMICS
ARCHAEOLOGY
SPORTS MANAGEMENT
MECHANICAL ENGINEERING
MUSIC INDUSTRY
SPORTS MANAGEMENT
TECHNOLOGY
SPORTS COACHING
INTERNATIONAL RELATIONS



FORENSIC SCIENCE
NUTRITION
ANTHROPOLOGY
HISTORY AND INTERNATIONAL RELATIONS
ANIMAL BEHAVIOUR
PODIATRY
PHYSICS WITH ASTROPHYSICS
COSTUME AND COSMOLOGY
DESIGN
CHINESE ETHICAL HACKING
STUDIES
FASHION MARKETING
PSYCHOLOGY AND COUNSELLING
GEOGRAPHY
RELIGIOUS STUDIES
TRAVEL AND TOURISM MANAGEMENT

PERFORMING ARTS
MEDICINE
ELECTRONIC AND COMPUTER SYSTEMS
BUSINESS INFORMATION SYSTEMS
CREATIVE DRAMA
MUSIC
MODERN LANGUAGES
TECHNOLOGY
ENVIRONMENTAL GEOGRAPHY
CIVIL ENGINEERING
ANIMATION
SOCIOLOGY

Why do people go to university?



OVERALL STUDENT SATISFACTION WITH THE UNIVERSITY
STUDENT BAROMETER 2014

To pursue a specific career

Professional development:

Some careers require a specific degree (Engineering, Medicine, Law, Teaching)

Become a specialist in a particular area and develop your networks - this will improve your career prospects.

Statistically, graduates advance faster in their careers, and have higher earning potential than non-graduates.



Some of our graduate employers



Loughborough's offers all students the chance to gain work experience in their chosen industry:

- Chance to earn whilst you learn.
- Average salary for placement students: £16,000
- Make industry contacts, make a good impression, much stronger networks and chances of employment.



The hardest graduate vacancies to fill:

- Quantity surveyors (77% vacancies unfilled past recruitment deadline)
- Mechanical engineers (72%)
- Vets (64%)
- Nurses (58%)
- R&D managers (57%)
- Programmers/software developers (56%)
- Financial/accounting technicians (54%)
- Estimators, valuers, assessors (52%)
- Engineering technicians (51%)
- Civil engineers (50%)
- Design/development engineers (49%)



*High demand for Business and Entrepreneurial skills!



OVERALL STUDENT SATISFACTION WITH THE UNIVERSITY
STUDENT BAROMETER 2014

Why do people go to university?

To develop themselves:

You have a passion for a course, and want study this at university level.

Chance to stay in education, whilst gaining more independence & challenge yourself.

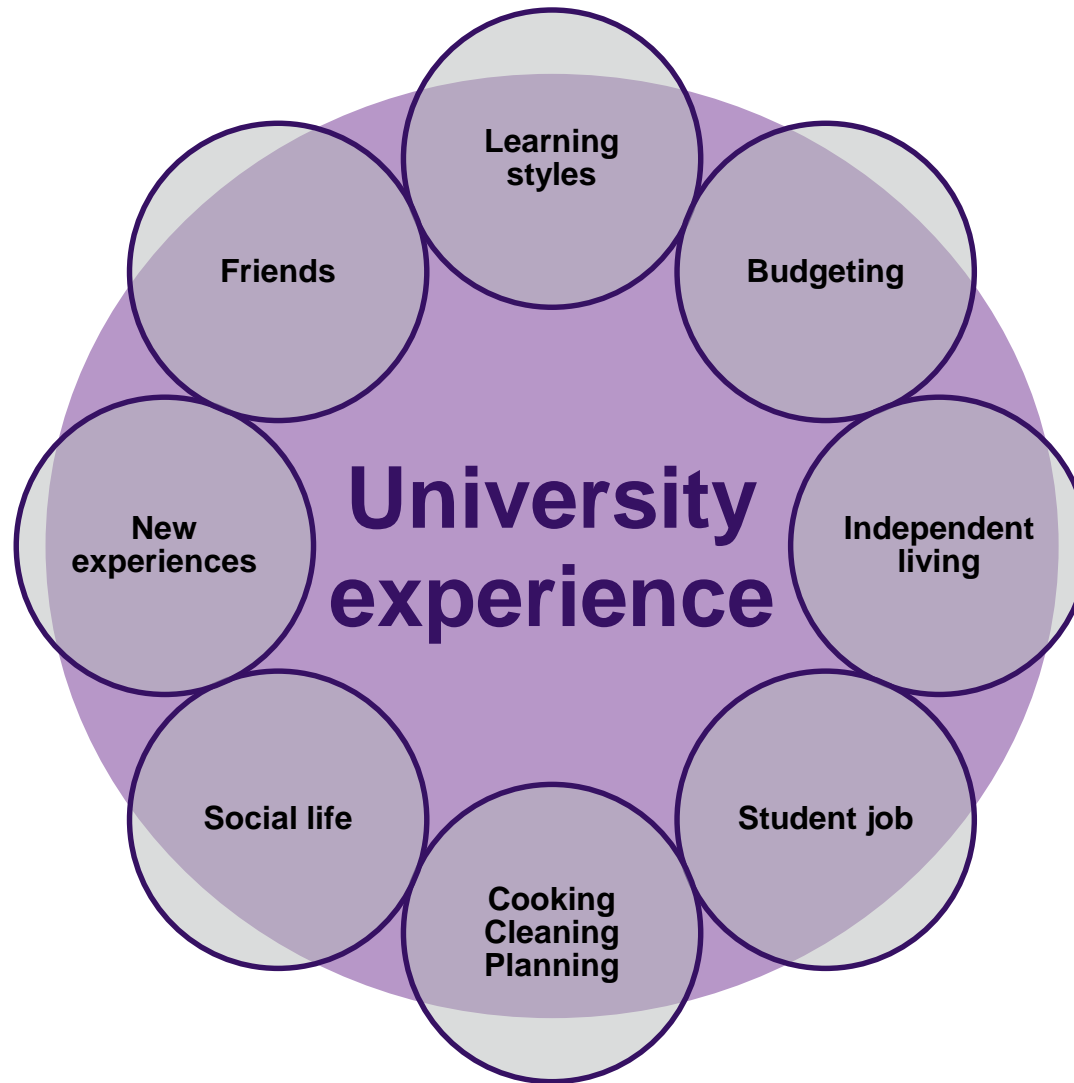
Seeing the value in a degree, but also wanting the student experience.



To have the 'experience'



Loughborough
University



BEST STUDENT EXPERIENCE
LLOYDS BANK QUALITY OF STUDENT LIFE SURVEY

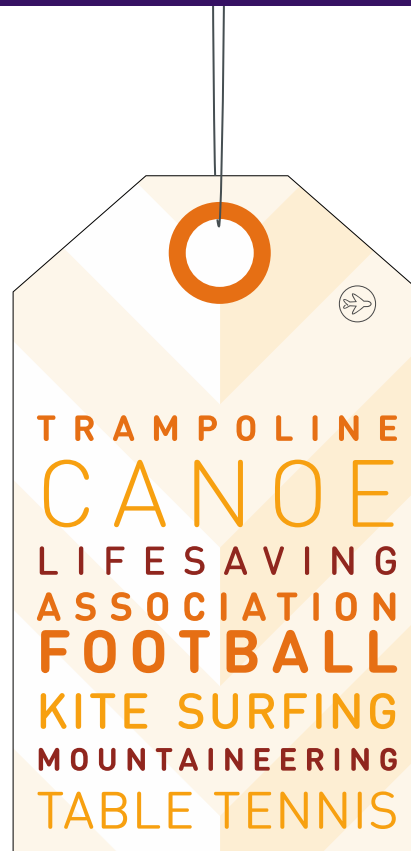
To get involved: societies



Loughborough
University



To get involved: clubs



EMPLOYEE				NUMBER	DEPARTMENT		DATE	PERIOD
Joseph H Bloggs				53401	R&D		26/05/2016	2016/2017
PAYMENTS				DEDUCTIONS			YEAR TO DATE	
DESC	QTY	RATE	AMOUNT	Tax:	£183.25		Gross	£1,833
				NI:	£139.36		Tax	£183.25
				SLC:	£ 7.00		Ni	£139.36
TOTAL				TOTAL	£329.61		SLC:	£7.00
EMPLOYER : The Dream Factory PLC				TAX CODE	NAT. INS. No	Rate	£1,503.39	
				0001L	JJ1234568B		NET PAY	

Figures based on graduate wage (£22,000), repayments based on maximum student loan entitlement (tuition fee & maintenance loan). No fee waivers, or bursaries have been added into the calculation.

***SLC = Student Loans Company**



65 UK institutions offer undergraduate degrees related to Geography

Study abroad year

Biology and Geography

Marine Geography

Development and
Globalisation

Applied Criminology &
Geography

Archaeology & Geography

*full time or
part time*

Geography &
Natural Hazards

Education with Geography

Placement Year

Business Studies &
Geography

Creative Writing
with Geography

Physical or Human or
International

3 or 4 or 5 year courses

Anthropology &
Geography

Geography with
Innovation

BA or BSc or MSci



Rankings



1ST

BEST STUDENT EXPERIENCE
LLOYDS BANK OF STUDENT SURVEY

1ST

FOR OVERALL SATISFACTION WITH STUDENT LIVING EXPERIENCE
STUDENT BAROMETER

2ND

2ND FOR STUDENT EXPERIENCE
TIMES HIGHER EDUCATION STUDENT EXPERIENCE SURVEY 2015

7

AWARDED 7 QUEEN'S ANNIVERSARY PRIZES
UNIVERSITY OF OXFORD

1ST

1ST IN THE UK AND GLOBALLY FOR OVERALL SATISFACTION WITH THE UNIVERSITY
STUDENT BAROMETER 2014

TOP 15

TOP 15 UNIVERSITY IN ALL MAJOR UK LEAGUE TABLES

95%

OVERALL STUDENT SATISFACTION WITH THE UNIVERSITY
STUDENT BAROMETER 2014

1ST

FOR OVERALL SATISFACTION WITH THE LEARNING EXPERIENCE
STUDENT BAROMETER 2014

1ST

FOR OVERALL SATISFACTION WITH STUDENT SUPPORT
STUDENT BAROMETER 2014

WHATUNI? STUDENT CHOICE Awards 2015

WINNER ACCOMMODATION

WHATUNI? STUDENT CHOICE Awards 2015

WINNER UNIVERSITY OF THE YEAR

5*

5* FOR EMPLOYABILITY
QS STARS UNIVERSITY RATINGS 2014

5*

5* FOR FACILITIES
QS STARS UNIVERSITY RATINGS 2014

WHATUNI? STUDENT CHOICE Awards 2015

WINNER STUDENT UNION

The UCAS website is a great place to start your research:

<https://www.ucas.com/>

Using the Search Tool you can look through the 50,000+ different HE courses by subject and identify the universities and colleges that offer those courses.



Unistats - (formerly Key Information Sets) was developed in response to the increasing demands from prospective students for information about higher education.

<https://unistats.direct.gov.uk/>

Allows users to compare:

- Student satisfaction
- Employment and salary data
- Accommodation costs
- Finance – fees, bursaries, scholarships
- Contact hours
- Assessment methods
- General information

UNISTATS



Plenty of choice!

- Wardened halls?
- Halls on campus?
- Halls off campus?
- Staying at home?
- Private hall?
- Catered? Self catered?
- En-suite? shared facilities?
- Single Bed? Double Bed?



How far away from home is the institution?

What are the transport links like?

What is the surrounding area like?

What is the cost of living?



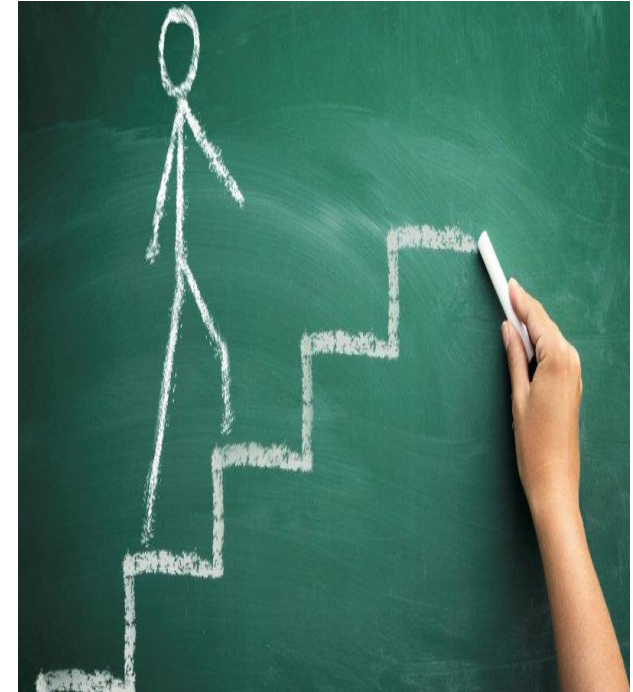
What kind of campus would you prefer?

- A campus in the centre of a big city?
- A university where the buildings are spread across a big city?
- A suburban-campus, near a big city.
- A campus near a small city or town
- A collegiate university.
- A university spread over several campuses



Rounding up: Four steps

1. **Choose your course**, location and type of campus.
2. **Narrow down** the list of institutions.
3. **Visit** the institutions.
4. **Be focused** - ask questions that matter to you!



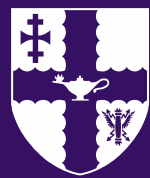
Finally....enjoy the experience!



What's Student Life Like?



OVERALL STUDENT SATISFACTION WITH THE UNIVERSITY
STUDENT BAROMETER 2014



Loughborough
University

Inspiring Winners since 1909

Come and see us! Next open day *30th June!*



www.lboro.ac.uk



[@lborouniversity](https://twitter.com/lborouniversity)



[/lborouniversity](https://facebook.com/lborouniversity)