



Welcome to The Hub Newsletter



Dear Parent/Carer,

Welcome to our first Hub Newsletter. The Hub refers to our SEN department that supports students with additional needs. Please let us know what you think of our new venture, and what you might like to see in future issues. Please do not hesitate to contact us (main contact is our administrator, Mrs Mackrill, mmackrill@stratfordschool.co.uk).

Meet SEN Lead Team



Ms S Bennett- Associate SENCo
Communication & Interaction/SEMH

Y8-9 SEN Lead



Mrs J Fifielska-Rozga- SENCo
Cognition & Learning/PD/EAL

Y10-Y13 SEN Lead



Mrs S Hermon- Inclusion Assessment Leader
Transition/Screening & Access Arrangements

Y7 SEN Lead



What do we offer for our students?

Dyslexia/Dyscalculia Screening– an assessment screener giving an indication of possible dyslexic or dyscalculic tendencies (not a formal diagnosis) Mrs S Hermon

Key worker sessions- available for identified students who need a key worker, sessions take place once a week during tutor time. Hub Team

SEMH sessions- 1 to 1 or small group sessions focusing on areas such as: social skills, anger management, emotion regulation, anxiety. Mrs A Khan

EAL provision- supporting learners who have English as an additional language.
Miss R Ghannam

RESPONSE programme- a bespoke provision for students with significant difficulties accessing the mainstream curriculum. Students will usually aim to complete a phased reintegration towards full-time school-based learning.

Mrs A Khan

Exam Access Arrangements – Provision or support arranged for exams when a particular need has been identified.

Mrs S Hermon

LEARNING PROFILING – assesses literacy and cognitive skills. Mrs S Hermon

Out of MFL intervention sessions- small group literacy and numeracy intervention for low ability Y7/8 students who need additional intervention to catch up with the basics.

Teaching Assistants Level 3

Step Up to English- an Entry level qualification that supports those low-level literacy students in Y9/10 and gives them an additional English qualification in KS4. Mrs P Murley

Maths intervention- small group interventions for students that are working below expected level in Maths or having specific learning difficulties. Mrs S Khara/ Miss J Adams

In class support- identified students are supported in their lessons. Support staff is linked to departments. Teaching Assistants

Dyslexia tutor time sessions- KS4 sessions focusing on revision techniques, memory strategies and proofreading. Mrs P Murley

Extra Transition sessions- additional secondary transition sessions for students with high-level SEN or any other needs identified by primary schools. Mrs S Hermon

Look on the next page



What else do we offer?



Access to laptops for those struggling with handwriting



Time out cards to access the Hub for those who need movement breaks, with sensory needs, and high anxiety



coloured overlays/coloured paged books for those with dyslexia



HUB break/lunchtime provision- a reserved table in the canteen supervised by Hub staff



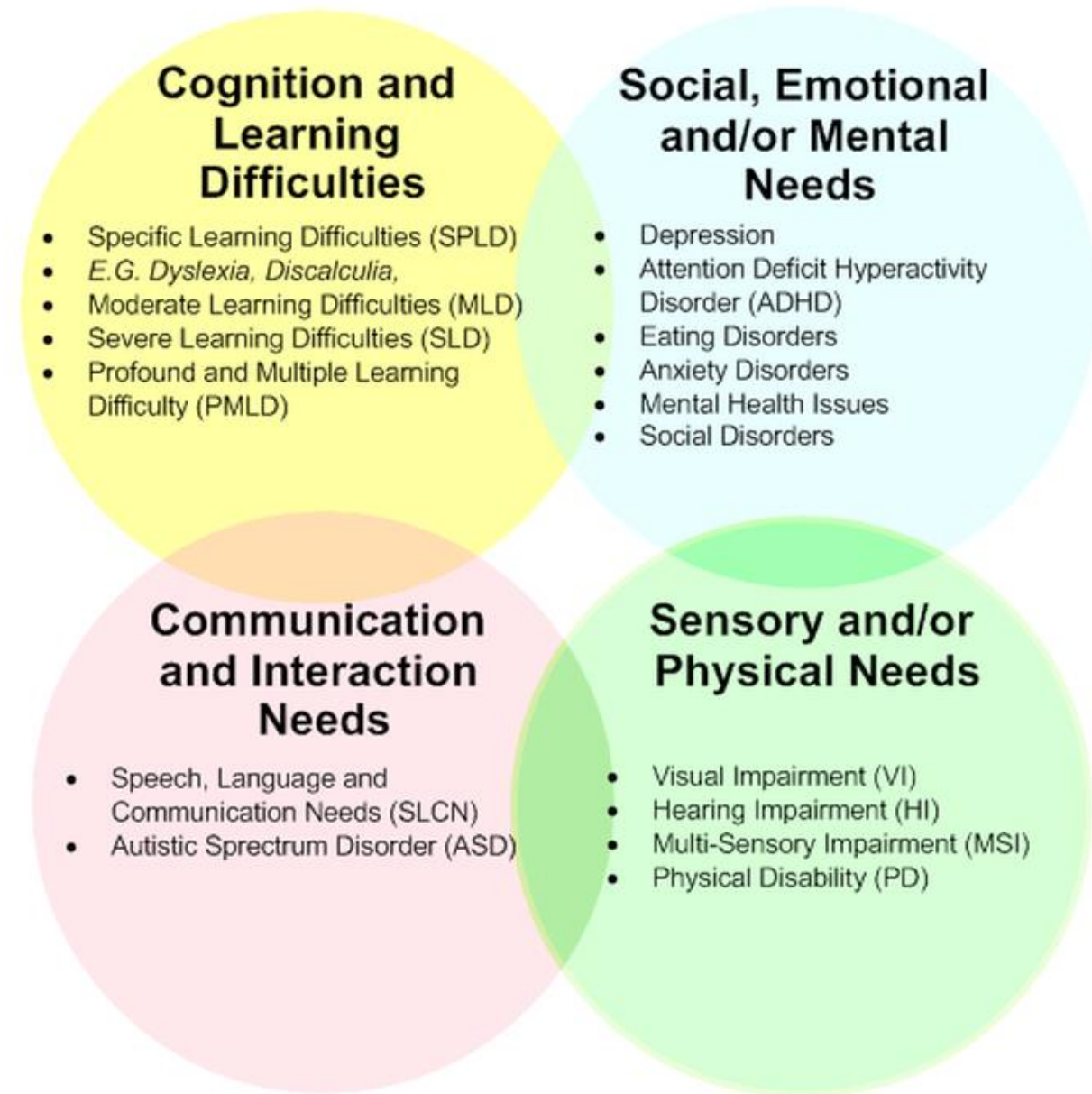
Support with homework daily from 3.10pm to 3.40pm in G29

		SEN Department Student Passport		Stratford upon Avon School
Tutor		Communication & Interaction	Cognition & Learning	Social, Emotional & Mental Health
College		Sensory and / or Physical Impairment		
		Strategies:		
Additional Information:		SEN Student Passport outlining student's difficulties and classroom strategies		
Access Arrangements:				

To commence soon-
handwriting and touch-typing
sessions/ trauma informed
sessions



There four
main broad
areas of SEN
needs.



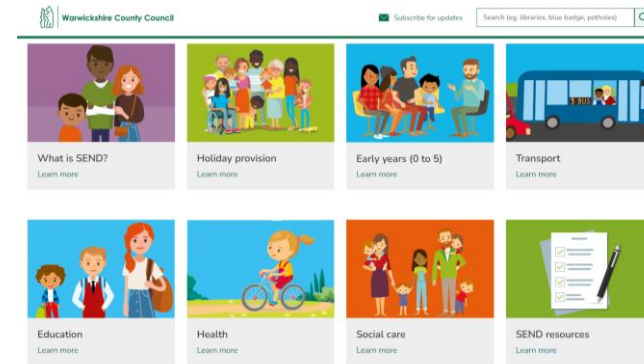
Autism Spectrum Disorder, Dyslexia and ADHD are at a higher rate than other difficulties in our school. This is why we would like to focus more on these areas in the first Hub Newsletter.

What help is available in the local area?

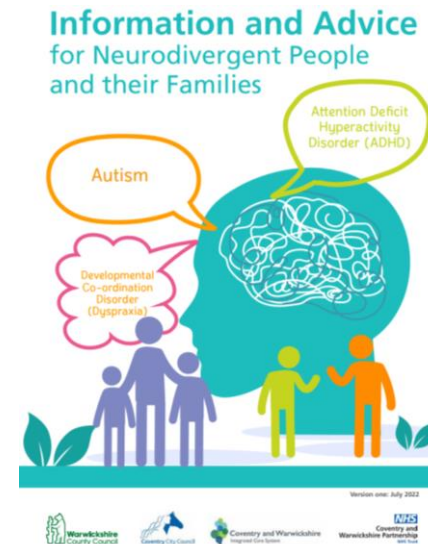
[SEND Local Offer – Warwickshire County Council](#)

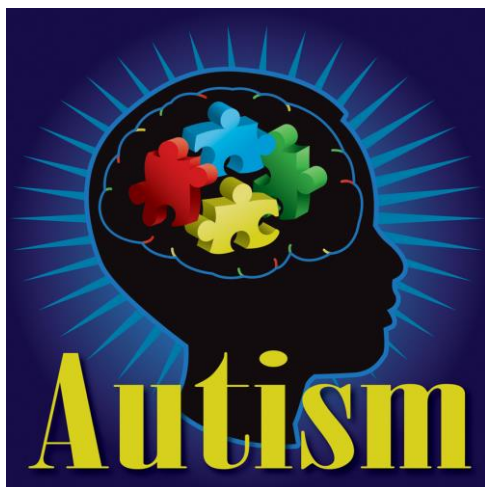
Latest Warwickshire SEND Newsletters

[Warwickshire County Council \(campaign-archive.com\)](#)



[Information and Advice for Neurodivergent People and their Families singles.pdf \(covwarkpt.nhs.uk\)](#)

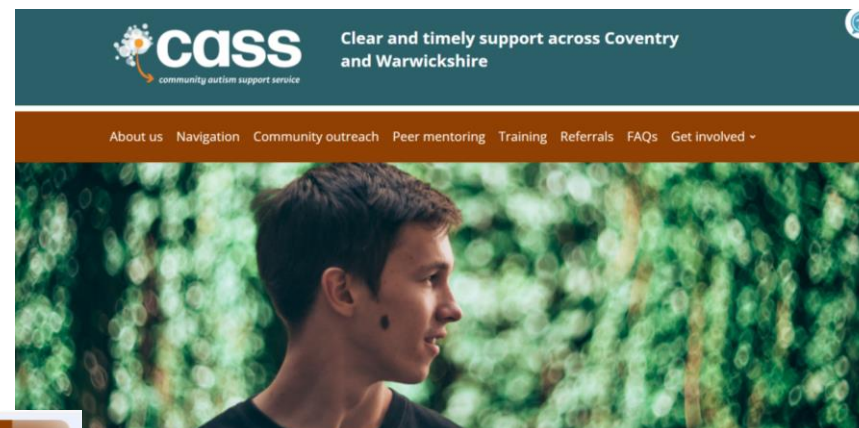




Useful links for parents
whose children have ASD
diagnosis

[Home - Community Autism Support Service
CASS \(casspartnership.org.uk\)](https://casspartnership.org.uk)

[Teenage Autism Support
Programme – CASS Workshop
Series Tickets, Tue 20 Feb 2024 at
10:00 | Eventbrite](#)



Our Toolbox series – **for Coventry and Warwickshire only**

Frequent and shorter-format sessions

Parent/carer toolboxes – Tuesday evenings

Sessions: 1hr; fortnightly Tuesday evenings; online; 20+ topics
For: parents/carers/families of autistic children

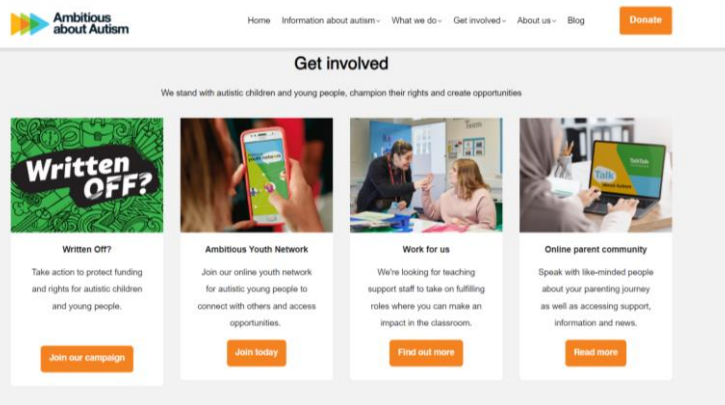
[Book a place via Eventbrite](#)

Parent/carer toolboxes – Thursday lunchtimes

Sessions: 1hr; weekly Thursday lunchtimes; online and face-to-face options; 20+ topics
For: parents/carers/families of autistic children

[Book a place via Eventbrite](#)

[Ambitious about Autism | National charity for autistic children
and young people](#)

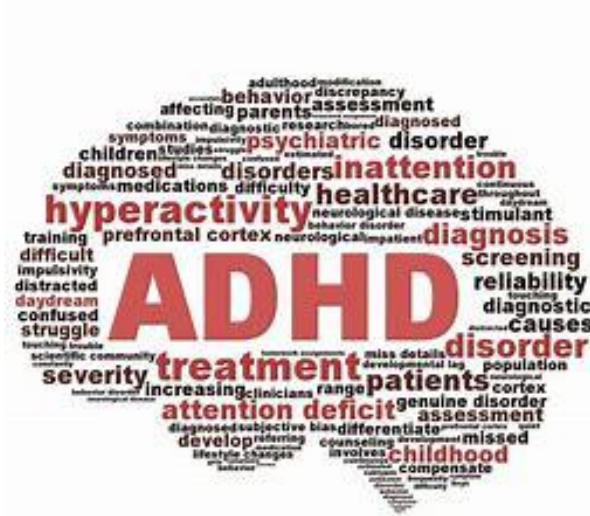


Young people explain autism

<https://www.youtube.com/watch?v=xTLUYda-008>

Coffee morning for the parents of students with ASD diagnosis to be arranged in summer term- date TBC

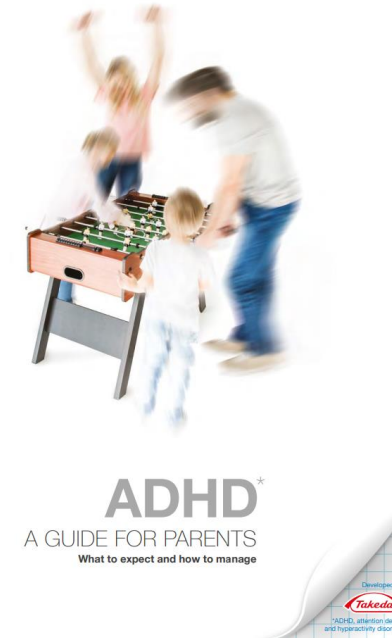
[Parent Leaflet Takeda download.pdf \(adhdandyou.co.uk\)](#)



Useful links for parents whose children have ADHD diagnosis



[ADHD Support For Your Child | Parents Advice Guide | YoungMinds](#)



Services for Families - ADHD Foundation :
ADHD Foundation

Top Tips for Parenting Children with ADHD

<https://www.bing.com/videos/riverview/relatedvideo?q=adhd+parents+guide&mid=0E36A4D19905C19433F40E36A4D19905C19433F4&FORM=VIRE>



Coffee morning for the parents of students with ADHD diagnosis to be arranged after this half term- date TBC

[How to Help a Child with Dyslexia at Home: Ideas, Resources \(healthline.com\)](https://www.healthline.com/health/dyslexia)



Useful links for parents
whose children have
dyslexia diagnosis



[Guidance for parents - British Dyslexia Association \(bdadyslexia.org.uk\)](https://bdadyslexia.org.uk)



[Supporting Dyslexic Children: Tips for Parents \(dyslexichelp.org\)](https://dyslexichelp.org)



Dyslexia

Supporting Dyslexic Children: Tips for Parents

Felicia G. January 2024 17 minutes read · Correction policy

